

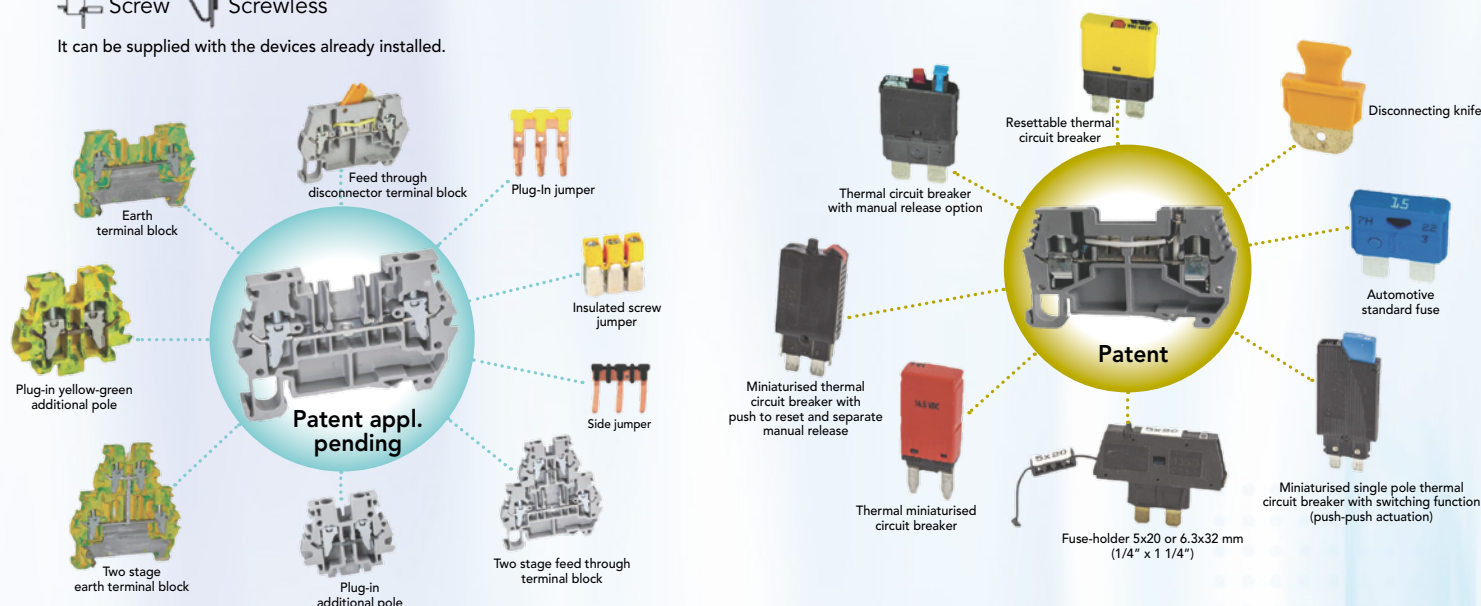


AVAILABLE VERSIONS:

Screw Screwless

It can be supplied with the devices already installed.

A new range of Terminal blocks are the simplest components in an electric panel, but they are not the less important ones! Today, Morsettitalia presents A new range of products, the result of a careful research, innovation and of a long and broad experience since 1972. Quality, service and reliability are always the same, guaranteed by ...MI.



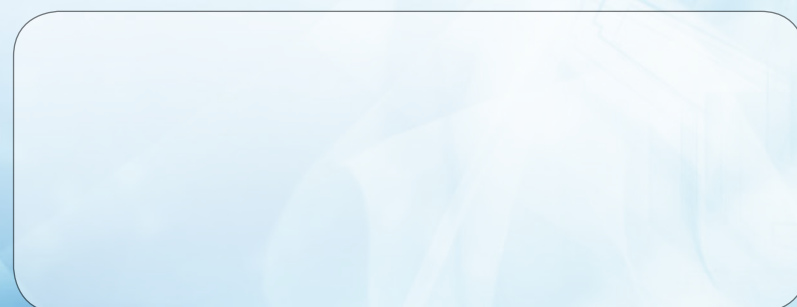
**IP56 HALOGEN-FREE
JUNCTION
BOXES**



PVC SLOTTED TRUNKINGS



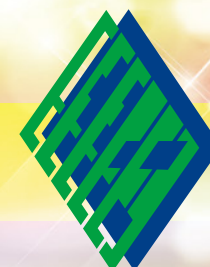
LSOH TRUNKINGS (U43X)
HL3 to R22,
EN45545-2:2013



RANGER ENTERPRISE COMPANY LIMITED 菱泰企業有限公司

Units A-B, 8/F, Block 1, Tai Ping Industrial Centre, 57 Ting Kok Road, Tai Po, New Territories, Hong Kong
香港新界大埔汀角路57號太平工業中心第一座8樓A-B室

Tel 電話: (852) 2420 8928 Fax 傳真: (852) 2494 9228 E-mail 電郵: sales@ranger.com.hk Website 網址: www.ranger.com.hk



RANGER NEWS

菱泰快訊

1st Issue 2016 2016年第一期

THIS ISSUE COVERS 本期報導

P.1
BUILD4ASIA
WELCOME TO VISIT OUR
BOOTH **1E-220**

P.2
ETA
HIGH STRENGTH SHEET STEEL
TO EN10268 USED FOR
E NUX STRUCTURE
OUTDOOR ENCLOSURE
SHEET STEEL ENCLOSURE
STAINLESS STEEL
304L/316L ENCLOSURE

P.3
DKC
COOLING SYSTEM FOR
ELECTRICAL ENCLOSURES
BOCCHIOTTI
IP66
FIBERGLASS ENCLOSURES

PMA
CABLE PROTECTION SYSTEM

P.4
MORSETTITALIA
A NEW RANGE
OF TERMINAL BLOCKS

EC
JUNCTION BOXES
SLOTTED TRUNKINGS

UNEX
LSOH TRUNKINGS (U43X)



MARKETING PROMOTION

As the region's leading Building Technology, Electrical Engineering and Security Show, Build4Asia will be staged at Hong Kong Convention & Exhibition Centre again on 4 - 6 May 2016.

Combining Asian Elenex, Asian Buildtex and Asian Securitex under one roof, the show will gather 500 international exhibitors at an exhibition space of 15,000 sqm to serve as an one-stop platform for Architects, Interiors Designers, Contractors, Developers, Engineers, Security System Integrators and etc.

Please come and visit us at booth 1E-220.





INNOVATIVE ENCLOSURE SOLUTIONS FOR INDUSTRIAL & ELECTRONIC APPLICATIONS

HIGH STRENGTH SHEET STEEL
to EN10268 used for E NUX Structure



E VIS OUTDOOR ENCLOSURE

Two materials:
Sheet steel & aluminium alloy
IP55 to IP56
(IEC EN62208; EN60529)



SHEET STEEL ENCLOSURE IP55 to IP66 (IEC EN62208; EN60529)



E NUX
Suite Cabinets



E COMP
Compact Enclosures



E MOX
Monobloc Cabinets



SDV
Terminal Boxes

ST
Wall Mounted Enclosures

SILICONE SEAL
• For all stainless steel enclosures
• -50°C to 200°C
• Resistant to most detergents, hot water jets and is easy to clean.



E MOX
Monobloc Cabinets



E NUX
Suite Cabinets



E COMP
Compact Enclosures



E COR
Wall Mounted Enclosures



E GRAN
Terminal Boxes



E NUX
Suite Cabinets

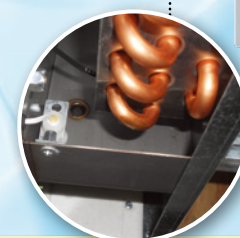


COOLING SYSTEM FOR ELECTRICAL ENCLOSURES

Lifting eyebolts provided
with all the version

Easy to replace
filtering panel

Digital
thermostat



3 levels of condensation
control for roof air conditioners:
- Condensation sink
- Filling valve
- Electronic float system



Polyurethane
seal applied by
continuous molding



Compressor valve
component allows an
easy recharge of the gas



Terminal block for
ON/OFF alarm
management

THERMOELECTRIC UNITS

PELTIER EFFECT

Mounting allowed on moving structures
Heating and cooling function
High IP rate: IP55 internal side



OUTDOOR COOLER

Ambient Temperature:
-20°C to +60°C

IP Rating:
Internal IP56,
External IP34



IP66 FIBERGLASS ENCLOSURES

Solid
Door



- 7 sizes
- Modular and adjustable frame
- Din rails adjustable in height
- Removable panels
- Robust construction
- Innovative design
- Snap-on fixing and 1/4 turn screws
- Designed for installations at temperature -25°C through 60°C
- Glow wire 960°C for solid door version, 750°C for window door version
- Line suitable for assembled units complying with Standard EN 61439-1



Window
Door



CABLE PROTECTION SYSTEM

- IP68/IP69K* (Static/Dynamic)
- Resistance to temperature, weathering, UV radiation and chemical agents
- High system pull-out strength
- Excellent fire protection characteristics (flammability, smoke density & toxicity)
- Perfect for railways, outdoor and food industry ...

* up to 100 bar

